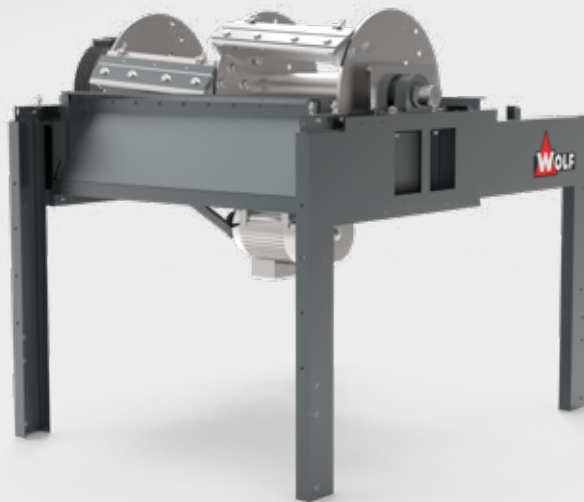


STANDING CUTTER

SH 600 / 1200



TECHNICAL DETAILS

SH 600

- ▶ 7,5 kW drive
- ▶ Up to approx 1.000 bines / hour
- ▶ 2 knives
- ▶ Cutting width 600 mm

SH 1200

- ▶ 11 kW drive
- ▶ Up to approx 1.400 bines / hour
- ▶ 4 knives
- ▶ Cutting width 1.200 mm

YOUR ADVANTAGES

- ▶ Pulling cut
- ▶ Long lifetime of knife
- ▶ Silent operation
- ▶ Consistent cutting performance by large balance mass of the drum
- ▶ Shredding of whole bines, bine parts and side shoots possible
- ▶ Self-supporting frame
- ▶ Can be placed as module in or next to the hop-picking machine

FOR AN EFFICIENT HARVEST

An important component for the harvesting process is a reliable and trouble-free shredding of the picked bines and bine residues. Due to the high drum weight and the cutting geometry of the two diagonally arranged knives, a high cutting performance can be reached. The precise cutting geometry considerably increases the lifetime of the knives. Moreover, a silent and trouble-free operation is assured.